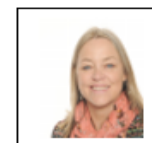


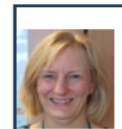


Designated Safeguarding Lead

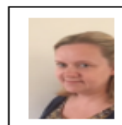


Joanne Fennelly.
Headteacher

Deputy Designated Safeguarding Leads



Rachel Rosevear. Deputy Headteacher



Jennifer de Board.
Assistant Headteacher



Laura Cunningham. Inclusion Lead



Hannah Garrard.
Family Support Worker



Natalie Richards. EYFS Lead

Fun Facts About Penguins



- Penguins were once called 'Weird Geese' when they were first discovered
- Penguin skeletons are unique from the other birds and allow them to swim fast
- Penguins can dive to depths of up to 500 to catch their prey
- Penguins do not have teeth, but they have barbed tongues and mouths to grip and swallow their food
- Penguins swallow pebbles and stones to help digest their food and dive deeper
- A group of penguins found in the water is called a raft
- Penguin couples can locate each other using distinct calls



Three stylized orange human figures of increasing size, standing in a row.

Ofsted Outstanding



Dear Parents and Carers,

It has to be the BEST week ever at SdS! An OUTSTANDING judgement given by three highly experienced inspectors and within a forensic two-day inspection, where every minute detail of the school was interrogated means everything to us. For the team to identify the pure ethos of our school within the report '***an exceptional ethos of deep care and high ambition threaded through every aspect of school life, that children love coming to school, that there is a relentless determination by all staff to give pupils the best education possible and this is an exceptional school.***'

Our school has been recognised as the fabulous place it is and this is the result of a fantastic staff team, amazing children and wonderful families.

I am always exceptionally proud to be the headteacher of SdS, but today I admit, I'm just a little bit prouder!

Have a lovely weekend and enjoy sharing the news about our outstanding school.

Mrs Fennelly



Parents and visitors are reminded that Danes Camp and Tesco supermarket kindly offer free parking for dropping off and picking up your children, including for meetings and events.



The car park at school is for staff parking and Blue badge holders



Please leave all disabled bays for our disabled staff and visitors access is required at all times.

Many thanks

Welcome to the children and families who will be joining us in Reception in September 2024. We can't wait to start this exciting journey with you.



Weekly Poster
**This week, we
celebrated the
wonderful
achievements of
the children and
how outstanding
everyone is!!**





As we continue to keep our community safe at the beginning and end of the day, please follow the highway code when parking. Recently cars have been parked in the bus bay, on the zig zags and on the corners of junctions.

The local PCSO will make unannounced visits to SdS and issue tickets to those parking inappropriately.

We are all here to ensure our children, families and neighbours are safe.

Dates for your



Date	Year group	Event
30th April	Einstein Class	School of Life at the Library
1st May	Whole School	School Photographer – class photos
2nd May	Whole School	Planetarium
3rd May	Whole School	Mufti Day to raise fund for the Changemakers. Donations welcome on Parentmail.
13th May	Year 6	SATs Week
16th May	Year 6	Picnic Lunch - on the field
7th June	Whole School & Families	Fun Run 3:30pm to 4:30pm If taking part, wear PE for the day
13th June	New Reception Parents 2024/25	Parent Intake Meeting 6:00pm to 8:00pm

Dates for your



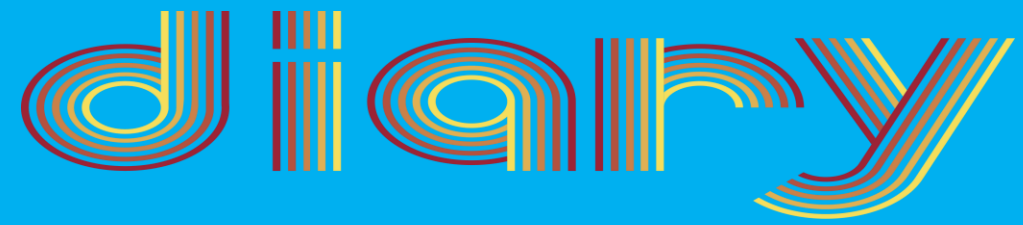
Date	Year group	Event
17th June	KS1 (Reception, Years 1, 2 & SU)	9:30am Sports Day – families invited
21st June	Year 6	Transition Prayer Space
28th June	Whole School	End of Year Reports
29th June	Whole School Community	School Summer Fete
1st July	Changemakers	Changemakers to University of Northampton
8th & 9th July	Whole School	Transition Days
10th July	KS2 (Years 3, 4, 5 & 6)	9:30am Sports Day – families invited
11th & 12th July	Whole School	Circus Skills Day- more information to come

Dates for your



Date	Year group	Event
15th July	Music groups, choirs- details of whom to come	Performing Arts Evening 5:30pm to 7:30pm
17th July	Drama Club Players	Drama Performance 10:00am to parents and families. Tickets coming soon
17th July	Whole School	Summer Disco 3.15pm to 4.15pm for Years SU, Rec, 1 & 2 4:30pm to 5:30pm for Years 3 & 4 5:45pm to 6:45pm for Years 5 & 6
18th July	Drama Club Players	Drama Performances 1:45pm & 6:00pm to parents and families. Tickets coming soon
19th July	Whole School & Families	Art Exhibition starts at 2:30pm
22nd July	Year 6 & Families	Leavers Assembly followed by tea and cake on the field

Trips Dates for your



Year Group	Date	Event
Reception	23rd May	Crocodiles of the World
Year 1	14th June	Woburn Safari Park
Year 2	9th May	Cadbury World
Year 3	20th – 21st June	Frontier Centre Residential
Year 4	26th – 28th June	West Runton Residential
Year 4	4th June	National Art Gallery London – Take One Picture
Year 5 Dyson Class	18th June	The Festival Performance at the Royal & Derngate
Year 6	12th June	STEAM Event at UoN
Year 6	1st - 5th July	Isle of Wight Residential

Are you looking for part time job?

We are looking to recruit a reliable and committed Lunchtime Supervisor to join our hard-working team. The successful candidate will be able to work effectively as a member of the team, have excellent interpersonal skills and consistently support the school values and approaches.

Start date ASAP

Days of work: Monday – Friday

**Starting salary: Grade C, Point 2 (£22,366 FTE – pro-rata). Hourly rate
£11.59**

Contract: Permanent, 5 hours per week (term time only – 38 weeks per year)

**If you are interested and would like more details or would like to apply please
email: info@simondesenslis.org**



Changemakers

As part of their plans to improve the playground, our group of Changemakers are determined to create another zone for children to enjoy playing games together. They would like to paint the pagoda bright colours, install tables and seats and purchase games such as uno, chess, snakes and ladders to engage their classmates even more during lunchtimes.

Since Christmas, they have been working hard planning their changes and writing to companies to ask for support for their playground project.

We are also having a mufti day next week to support these plans further. Thanks to Harry in Year 3 for this fantastic poster he made at home to advertise the event. You can make a donation on your parentmail account and we look forward to seeing all the children in their bright clothes on Friday 3rd!

Finally, if you have any games, coloured paint suitable for outside use or any work links for match funding, please email Mrs de Board jennifer.deboard@simondesenlis.org



WANTED

PRE-LOVED UNIFORM



**Please drop off at the school
office between 6 - 10 May.**

**A pre-loved uniform sale will be
announced shortly.**

**All proceeds go to Friends of
Simon de Senlis.**

Think of the Week

A **think** is an **unusual question** that makes you **think**. A beguiling question about everyday things that stops you in your tracks and helps you start to look at the world in a whole new light.



Why are you outstanding???



Online Safety- YouTube



What Parents & Carers Need to Know about YOUTUBE

YouTube is a video-sharing social media platform that allows billions of people around the world to watch, share and upload their own videos with a vast range of content – including sport, entertainment, education and lots more. It's a superb space for people to consume content that they're interested in. As a result, this astronomically popular platform has had a huge social impact: influencing online culture on a global scale and creating new celebrities.

INAPPROPRIATE CONTENT

YouTube is free and can be accessed via numerous devices, even without creating a YouTube account. Some content is flagged as 'age-restricted' (requiring the user to be logged into an account with a verified age of 18), but children can still view some mildly inappropriate material. This can include profanity and violence, which some young users may find upsetting.

CONNECT WITH STRANGERS

YouTube is a social media platform which allows people to interact with other (usually unknown) users. Account holders can leave comments on any video they have access to, as well as messaging other users directly. Connecting with strangers online, of course, can potentially lead to children being exposed to adult language, to cyberbullying and even to encountering online predators.

SUGGESTED CONTENT

YouTube recommends videos related to what the user has previously watched on their account, aiming to provide content that will interest them. This is intended to be helpful but can also lead to binge-watching and the risk of screen addiction, especially if 'auto-play' is activated. Users without an account are shown popular videos from the last 24 hours, which might not always be suitable for children.

HIGH VISIBILITY

Content creators can also be put at risk – especially young ones who try to make their online presence as visible as possible. Creating and uploading content exposes children to potential harassment and toxicity from the comments section, along with the possibility of direct messaging from strangers. Videos posted publicly can be watched by anyone in the world.

TRENDS AND CHALLENGES

YouTube is teeming with trends, challenges and memes that are fun to watch and join in with. Children often find these immensely entertaining and might want to try them out. Most challenges tend to be safe, but many others may harm children through either washing or copying. The painful 'salt and ice challenge', which can cause injuries very quickly, is just one of many such examples.

SNEAKY SCAMMERS

Popular YouTube channels regularly have scammers posing as a well-known influencer in the comments section, attempting to lure users into clicking on their phishing links. Scammers impersonate YouTubers by adopting their names and profile images, and sometimes offer cash gifts or 'get rich quick' schemes. Children may not realise that these users are not who they claim to be.

Online Safety- You Tube continued

Advice for Parents & Carers

APPLY RESTRICTED MODE

Restricted Mode is an optional setting that prevents YouTube from showing inappropriate content (such as drug and alcohol abuse, graphic violence and sexual situations) to underage viewers. To prevent your child from chancing across age-inappropriate content on the platform, we would recommend enabling Restricted Mode on each device that your child uses to access YouTube.



TRY GOOGLE FAMILY

Creating a Google Family account allows you to monitor what your child is watching, uploading and sharing with other users. It will also display their recently watched videos, searches and recommended videos. In general, a Google Family account gives you an oversight of how your child is using sites like YouTube and helps you ensure they are only accessing appropriate content.



CHECK PRIVACY SETTINGS

YouTube gives users the option of uploading videos as 'private' or 'unlisted' – so they could be shared exclusively with family and friends, for example. Comments on videos can also be disabled and channels that your child is subscribed to can be hidden. If your child is only uploading videos that are protected as 'private', they are far less likely to receive direct messages from strangers.



CHECK OTHER PLATFORMS

Influential content creators usually have other social media accounts which they encourage their fans to follow. Having an open discussion about this with your child makes it easier to find out how else they might be following a particular creator online. It also opens up avenues for you to check out that creator's other channels to see what type of content your child is being exposed to.



MONITOR ENGAGEMENT

YouTube is the online viewing platform of choice for billions of people, many of them children. Younger children will watch different content to older ones, of course, and react to content differently. You may want to keep an eye on how your child interacts with content on YouTube – and, if applicable, with content creators – to understand the types of videos they are interested in.



LIMIT SPENDING

Although YouTube is free, it does offer some in-app purchases: users can rent and buy TV shows and movies to watch, for example. If you're not comfortable with your child purchasing content online, limit their access to your bank cards and online payment methods. Many parents have discovered to their cost that a child happily devouring a paid-for series quickly leads to an unexpected bill.



Meet Our Expert

Olivia Dutton (@k_a_bunaway) has worked as an editorial journalist in the gaming industry since 2015, providing websites with lead coverage, reviews and gaming guides. She is the owner of [canonadvgaming](#) and is currently working on various gaming-related projects including game development and writing non-fiction books.








National Online Safety

#WakeUpWednesday

Northampton Museum and Gallery- town centre free exhibitions.

[What's On \(northamptonmuseums.com\)](http://northamptonmuseums.com)

<p>Vivienne Westwood: A Personal Collection</p>  	<p>Life and Art: Elke Pollard Retrospective</p>  	<p>From The Collection: Abstract Art</p>  	<p>Unearthed: Portable Antiquities Scheme finds from Across Northamptonshire</p>  <p>Unearthed: Portable Antiquities Scheme Finds from across Northamptonshire</p> <p>January to April 2024</p> <p>An exhibition of archaeological finds in four Northamptonshire libraries</p> <p>Brackley Library Towcester Library Daventry Library Weston Favell Library</p>  <p>Scan to view the list of Northamptonshire libraries</p>  <p>Scan for more information about the exhibition</p> <p>Northampton Museum & Art Gallery 01604 838111 www.northamptonmuseums.com</p>  <p>Northampton Museum Northamptonshire Northamptonshire</p>   
--	--	---	---

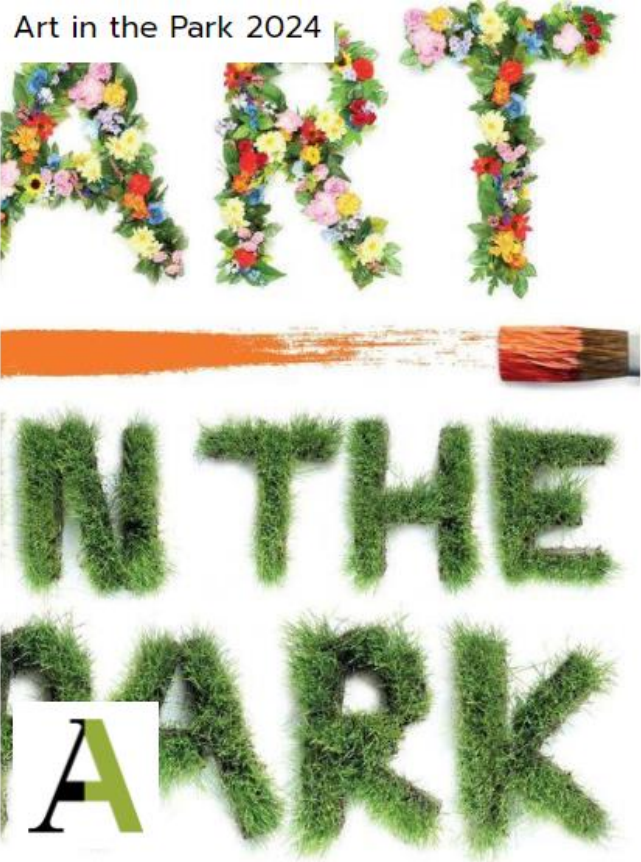
Abington Park Museum- free exhibitions.

[What's On \(northamptonmuseums.com\)](http://northamptonmuseums.com)

Beyond Photography: Artworks by Andy Carter



Art in the Park 2024



It's A Bug's Life



BEAVERS

TIME FOR FUN

For 5 3/4 to 8 years old who want to have fun and adventures. (can currently accept up to 7 years old only)
Abbey Centre, Mondays 6.15 to 7.15pm

Direct from the beavers

"Beavers are always on an adventure"

"Beavers is a fun place where you can play games, do activities and make new friends"

"Fun filled activities every week, learning life skills, we also have a promise and motto that keep us united"

beavers@50thnorthamptonhunsburyscouts.co.uk
Even if too young put their names down on our waiting list



SPORTS – DANCE

DELAPRÉ NH FEST

boombastic events

Delapre Abbey

Family silent disco
at Delapre Abbey

PARTY RETRO CHART

SUN 19 MAY

11:00-13:30
14:30-17:00

TICKETS FROM £7.50 VIA
BOOMEVENTS.CO.UK/TICKETS

all proceeds go towards
THE GOOD TIMES PROJECT

boombastic
silent:disco

DIY HOME PARTY PACKS FROM £100
FREE DELIVERY/COLLECT WITHIN NORTHANTS
EASY TO SETUP
INCLUDES LOADED IPODS

PARTY FOR 10
10 HEADPHONES
2 TRANSMITTERS
2 LOADED IPODS
£100

PARTY FOR 25
25 HEADPHONES
2 TRANSMITTERS
2 LOADED IPODS
£175

PARTY FOR 50
50 HEADPHONES
2 TRANSMITTERS
2 LOADED IPODS
£250

SUITABLE FOR:
GET TOGETHERS - BBQs - KIDS
PARTIES - WEDDINGS - HEN
WEEKENDS - SCHOOL FUNDRAISERS

HELP US MAKE A DIFFERENCE
All hires go through our new scheme The Good Times Project - we use a proportion of hire revenue to subsidise workshops for local community groups!

boomsilentdisco.co.uk
or call 01604 372767

Some children who attended the Easter Activity Camp had a chance to join in the Silent Disco, which was brilliant. This was in partnership with the Good Times Project. If you would like to experience this amazing dance workout then book your tickets now or find out more about the Party Packs.

Stay active

Miss Bland

School Mental Health Leads

Ms Cunningham and Miss Garrard are the Mental Health Leads at Simon de Senlis

If you have any worries or concerns about any aspect of your child's mental wellbeing please speak to your child's class teacher or contact us in school.



Laura Cunningham

Inclusion Leader
Deputy Designated Safeguarding Lead
Senior Mental Health Lead



Hannah Garrard

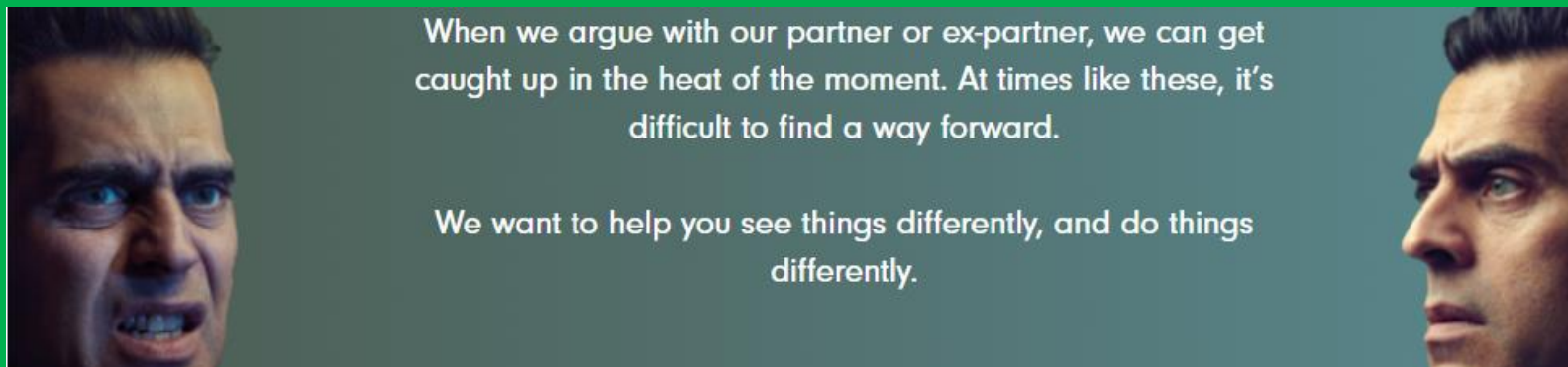
Family Support Worker
Deputy Designated Safeguarding Lead
Mental Health First Aider

Miss Garrard says...

What is Parental Conflict?

Conflict between parents is a normal part of relationships and family life. Not all conflict is damaging, but the way conflict manifests – its frequency, intensity and how it is resolved – can negatively affect children.

Where conflict between parents is frequent, intense and poorly resolved, it can harm children's outcomes – regardless of whether parents are together or separated.



See it differently is a service that offer videos as a reflection tool to support parents who are experiencing conflict. These videos are a useful tool to see what conflict between parents look through the eyes of a child.

Here is the link to this supportive resource: [See it differently](#)



SEND SESSIONS 2024
First Friday of every month
6:30pm-8:30pm

Exclusive SEND sessions
for families and friends of children
with special educational needs and disabilities

£8.95 per child

Adults Free



EVERY 2ND TUESDAY
7-8.30PM
STARTING 14TH MAY

NORTHAMPTON
PARENT/CARER
SUPPORT
GROUP



Are you a parent/carer of
an autistic child or young
person?

Come along and meet other
parents /carers, increase
your support network and
take some time out for you!

THE COACH HOUSE
DELAPRE ABBEY
NN4 8AW

For more information email:
fiona@enfold.org.uk



www.enfold.org.uk



Simon de Senlis Primary



Dear parents and carers, as you are aware we have recently joined a school SEND partnership with Hunsbury Park Primary. As a result of this, we are able to offer parents access to some free online workshops run by a host of SEN practitioners across the year.

This term we are pleased to offer you a Zoom online session with NHS SALT, on Tuesday 30th April 2024 from 7-9pm. Details of the session content are below:

Understanding Developmental Language Disorder

This session is completely free to all parents with children at Simon de Senlis. To register your interest you must consent to share your email address with Kate Burt from Hunsbury Park Primary School. Closer to the time we will then send out a Zoom link. This link must not be shared with anyone else whose children do not attend our school as Kate Burt will collate a list of parent's email addresses and these will be checked during the meeting.

We hope that you will take up this exciting offer.

Please register your interest by replying to the email (sent to all parents on Parentmail) by Friday 26th April.

Any questions please contact me via the school.

Many thanks, Ms Cunningham

FREE*

YOUTH CLUB



Danes Camp Leisure Centre

5-8 years 4.45pm-5.45pm

9-13 years 6pm-7pm

Every Tuesday (Term Time only)

*Please note these sessions are only available for children and young people residing within the East Hunsbury Parish. You will be asked to supply an eligible postcode to attend.



Funded by:



East Hunsbury
Parish Council



Danes Camp Leisure Centre, Clannell Road, NN4 0RX

**Book 8 days
in advance**

via www.trilogyleisure.co.uk

[Events in Northampton |](#)
[Local Events Near Me | Day](#)
[Out \(delapreabbey.org\)](#)

DELAPRE ABBEY

As a local place to visit, take a look at the events taking place over the coming weeks.

[Events in Northampton | Local Events Near Me | Day Out \(delapreabbey.org\)](#)



Food Aid / Community Larders. No referral required

Day	Time	Location	Membership / costs
Monday	1:30pm – 2:15pm	Roade village Hall. Bailey Brooks Lane. NN7 2LS	Access to all. £10 subscription, £5 p/w
Monday	4pm – 7pm	McCarthy Dixon Food Larder @ Swan & Helmet. Northampton Town Centre	No referral - Turn up £5 per 8 Items
Tuesday	2pm – 3pm & 6pm - 7pm	The Nest, Woodford Halse Primary Academy, Scrivens Hill, Woodford Halse, NN11 3SU.	Access to all. £10 subscription, £5 p/w
Tuesday	4pm – 7pm	McCarthy Dixon Food Larder @ Swan & Helmet. Northampton Town Centre	No referral - Turn up £5 per 8 Items
Wednesday	11am - 1pm	Dostiyo Community Fridge. Northampton Town Centre	No Criteria
Wednesday	4:15pm – 6pm	Towcester Community Larder Riverside Centre, Islington Road, Towcester, NN12 6AU	Access to all. £10 subscription, £5 p/w
Wednesday	4:30pm – 5:15pm	Brixworth Community Larder	Access to all. £10 subscription, £5 p/w

Food Aid / Community Larders. No referral required

Day	Time	Location	Membership / costs
Wednesday	5:30pm – 6:15pm	Moulton Community Larder	Access to all. £10 subscription, £5 p/w
Wednesday	4pm – 7pm	McCarthy Dixon Food Larder @ Swan & Helmet. Northampton Town Centre	No referral - Turn up £5 per 8 Items
Thursday	10am – 11:30am	Towcester Community Larder Riverside Centre, Islington Road, Towcester, NN12 6AU	Access to all. £10 subscription, £5 p/w
Thursday	11am - 1pm	Dostiyo Community Fridge. Northampton Town Centre	No Criteria
Thursday	4pm – 7pm	McCarthy Dixon Food Larder @ Swan & Helmet. Northampton Town Centre	No referral - Turn up £5 per 8 Items
Friday	4pm – 7pm	McCarthy Dixon Food Larder @ Swan & Helmet. Northampton Town Centre	No referral - Turn up £5 per 8 Items
Saturday	12pm - 2pm	McCarthy Dixon Food Larder @ Swan & Helmet. Northampton Town Centre	No referral - Turn up £5 per 8 Items
Sunday	12pm - 2pm	McCarthy Dixon Food Larder @ Swan & Helmet. Northampton Town Centre	No referral - Turn up £5 per 8 Items

Calling All Kids: Get Ready to Dash for Cash!

Enter the Northampton 10k, 5k or Junior Run to support our amazing local NHS and your school at the same time.

Sponsored by:



Join us for an unforgettable event!

- A fast and flat route, suitable for all abilities
- **FREE** entry with a minimum sponsorship*
- **Distances available:** Junior (half a mile) 10k and 5k
- Money raised will support Northamptonshire Health Charity and your school!

*£50 for Junior Race, £150 for 10k and 5k Race, T&Cs apply, contact us for details.

Sunday
26th May
at Sixfields
Stadium



Sign up here



www.northamptonshirehealthcharity.co.uk



Registered Charity No: 1165702



If you're interested in taking part in a sponsored funrun, this could be of interest to you.

The entry to the funrun is free but there is a requirement for sponsorship.

The first £50 of sponsorship will go to Northampton Health Charity, anything above this will be split 50/50 between Northampton Health Charity and Simon de Senlis.

If you want to register for the run go to the following website: www.northamptonshirehealthcharity.co.uk

The logo for the Milton Keynes Brick Festival is set against a yellow background with a grid of squares. The text 'MILTON KEYNES' is in white on a black background. 'BRICK' is in large white letters on a black background. 'FESTIVAL' is in white on a red background.

MILTON KEYNES BRICK FESTIVAL

MORE LEGO THAN YOU CAN DREAM OF

Don't miss the chance to be a part of the most epic LEGO celebration! Grab your tickets and get ready for a day filled with building, creativity, and endless fun!

Book now at www.MiltonKeynesBrickFestival.com

Save the date: Bank Holiday Monday 6th May 2024

Where: Middleton Hall, centre:mk, Midsummer Blvd, Milton Keynes, MK9 3QA

Event Times: 10am – 6pm (see your ticket name for your entry time)

Find out more – www.BrickFestivalEvents.com

LEGO CAR RALLY

RUBBER BAND CHALLENGE

BUILD ANY TYPE OF VEHICLE ONLY USING LEGO ELEMENTS

*FURTHEST DISTANCE IN EACH CLASS
WINS AN AWESOME LEGO PRIZE!*

3 AGE CLASSES

- > UNDER 11s
- > 11-16s
- > 17s & OVER



YOUR RUBBER BAND WILL BE SUPPLIED ON THE DAY:



VEHICLES MUST BE MADE ENTIRELY OUT OF LEGO ELEMENTS. THEY MUST BE EXCLUSIVELY POWERED BY THE RUBBER BAND PROVIDED. THERE ARE NO SIZE OR WEIGHT LIMITS. VEHICLES MUST NOT LEAVE THE GROUND DURING THEIR POWERED RUN PLEASE VISIT THE LEGO CAR RALLY SIGN IN DESK WHEN YOU ARRIVE AT THE EVENT. ENSURE YOUR VEHICLE IS BROUGHT INTO THE EVENT IN A NAMED BAG.

*BUILD YOUR VEHICLE AT HOME
BRING IT ALONG TO RACE & WIN!*

TURN
OVER FOR
EVENT
DETAILS

MILTON KEYNES
BRICK
FESTIVAL

TICKETS AVAILABLE ONLINE NOW!



**AWESOME LEGO
DISPLAYS**

**OLD & NEW LEGO
FOR SALE**

**ACTIVITIES
FOR ALL AGES**

**EXCITING BUILD
COMPETITIONS**

**PICK YOUR OWN
LOOSE BRICKS**

6TH MAY 2024

MILTON KEYNES
BRICK
FESTIVAL

**MORE LEGO THAN
YOU CAN DREAM OF**

MIDDLETON HALL





NPAT Academic Calendar 24/25

Teacher Training Days
 Monday 2 September 2024
 Tuesday 3 September 2024
 Monday 4 November 2024
 Monday 24 February 2025
 Monday 2 June 2025

September 2024					
Mon		2	9	16	23
Tues		3	10	17	24
Wed		4	11	18	25
Thu		5	12	19	26
Fri	30	6	13	20	27

October 2024					
Mon	30	7	14	21	28
Tues	1	8	15	22	29
Wed	2	9	16	23	30
Thu	3	10	17	24	31
Fri	4	11	18	25	

November 2024					
Mon		4	11	18	25
Tues		5	12	19	26
Wed		6	13	20	27
Thu		7	14	21	28
Fri	1	8	15	22	29

December 2024					
Mon	2	9	16	23	30
Tues	3	10	17	24	31
Wed	4	11	18	25	
Thu	5	12	19	26	
Fri	6	13	20	27	

January 2025					
Mon		6	13	20	27
Tues		7	14	21	28
Wed	1	8	15	22	29
Thu	2	9	16	23	30
Fri	3	10	17	24	31

February 2025					
Mon	3	10	17	24	
Tues	4	11	18	25	
Wed	5	12	19	26	
Thu	6	13	20	27	
Fri	7	14	21	28	

March 2025					
Mon		3	10	17	24 31
Tues		4	11	18	25
Wed		5	12	19	26
Thu		6	13	20	27
Fri		7	14	21	28

April 2025					
Mon		7	14	21	28
Tues	1	8	15	22	29
Wed	2	9	16	23	30
Thu	3	10	17	24	
Fri	4	11	18	25	

May 2025					
Mon		5	12	19	26
Tues		6	13	20	27
Wed		7	14	21	28
Thu	1	8	15	22	29
Fri	2	9	16	23	30

June 2025					
Mon		2	9	16	23
Tues		3	10	17	24
Wed		4	11	18	25
Thu		5	12	19	26
Fri		6	13	20	27

July 2025					
Mon	30	7	14	21	28
Tues	1	8	15	22	29
Wed	2	9	16	23	30
Thu	3	10	17	24	31
Fri	4	11	18	25	

August 2025					
Mon			4	11	18 25
Tues			5	12	19 26
Wed			6	13	20 27
Thu			7	14	21 28
Fri		1	8	15	22 29



Key

School Holidays		Teacher Training Days	
Pupil Days		Bank Holidays	



NPAT Academic Calendar 25/26

Teacher Training Days

Monday 1st September 2025
 Tuesday 2nd September 2025
 Monday 3rd November 2025
 Monday 5th January 2026
 Monday 20th July 2026*
 (disaggregated)

September 2025					
Mon	1	8	15	22	29
Tue	2	9	16	23	30
Wed	3	10	17	24	
Thu	4	11	18	25	
Fri	5	12	19	26	

October 2025					
Mon		6	13	20	27
Tue		7	14	21	28
Wed	1	8	15	22	29
Thu	2	9	16	23	30
Fri	3	10	17	24	31

November 2025					
Mon	3	10	17	24	
Tue	4	11	18	25	
Wed	5	12	19	26	
Thu	6	13	20	27	
Fri	7	14	21	28	

December 2025					
Mon	1	8	15	22	29
Tue	2	9	16	23	30
Wed	3	10	17	24	31
Thu	4	11	18	25	
Fri	5	12	19	26	

January 2026					
Mon		5	12	19	26
Tue		6	13	20	27
Wed		7	14	21	28
Thu	1	8	15	22	29
Fri	2	9	16	23	30

February 2026					
Mon	2	9	16	23	
Tue	3	10	17	24	
Wed	4	11	18	25	
Thu	5	12	19	26	
Fri	6	13	20	27	

March 2026					
Mon	2	9	16	23	30
Tue	3	10	17	24	31
Wed	4	11	18	25	
Thu	5	12	19	26	
Fri	6	13	20	27	

April 2026					
Mon		6	13	20	27
Tue		7	14	21	28
Wed	1	8	15	22	29
Thu	2	9	16	23	30
Fri	3	10	17	24	

May 2026					
Mon		4	11	18	25
Tue		5	12	19	26
Wed		6	13	20	27
Thu		7	14	21	28
Fri	1	8	15	22	29

June 2026					
Mon	1	8	15	22	29
Tue	2	9	16	23	30
Wed	3	10	17	24	
Thu	4	11	18	25	
Fri	5	12	19	26	

July 2026					
Mon		6	13	20	27
Tue		7	14	21	28
Wed	1	8	15	22	29
Thu	2	9	16	23	30
Fri	3	10	17	24	31

August 2026					
Mon	3	10	17	24	31
Tue	4	11	18	25	
Wed	5	12	19	26	
Thu	6	13	20	27	
Fri	7	14	21	28	

News For Our Children

26th April 2024



What's happening in the news this week?



Let's have a look at this week's poster!

22nd - 28th April 2024



**Can you learn to
persevere?**



Let's look at this week's story

Scottish runner, Jasmin Paris, has become the first female to complete what is thought by many to be the world's toughest race. Jasmin is one of only twenty people to have successfully completed the Barkley Marathons in Tennessee, USA. She crossed the finish line in March with less than 100 seconds to spare before the 60-hour cut-off time. Jasmin said she wanted to inspire others and test the limits of her capabilities.

This week's story looks at events related to ...



Time to Play!

The boss of Lego, Niels Christensen, is one of a group of people who want to raise awareness of the importance of play. He says, '... all children should benefit from the power of play'. His comments come after a worldwide study found that nearly three quarters of children think that their grown-ups do not take play seriously. Education experts across the globe agree on the huge benefits that play can bring children, including building curiosity, developing imagination and solving problems. A coworker of Niels at Lego says, 'Play is the superpower of children', but she worries that not all children



Pictured: Lego. **Source:** Canva.

get the chance to learn through play. To this end, some companies from around the world have come together and decided to invent a day dedicated to playing! The very first 'International Day of Play' will take place on 11th June this year. The hope is that this day will remind people around the world just how important it is for children to be able to play freely. So, get the date in your diary, it's time for children to teach their adults a thing or two about playing!

Hello, what's your name?

The first few months of 2024 have seen some incredibly wet and windy weather in many countries. But did you know that lots of storms have names? The idea behind this is that it helps the public to keep track of storms as they move and change. It also helps people to prepare for weather that can be dangerous. Not all storms are named, only those that are expected to be particularly severe. Most countries have a special office in charge of studying and

predicting weather patterns. In the UK, this is the Met Office, and they decide whether a storm should be named and what that name should be. In fact, the Met Office ask the public for ideas for storm names, and the most popular names are made into a list for the year. So, if you have an awesome idea, you can send it into the Met Office, and it might be used to name the next big storm!



Pictured: A storm approaching.
Source: Canva.

Should everyone be allowed to lead a private life?



There are some things that you don't always want people to know. Everybody should be able to keep some things private.

Ted

Let us know what you think about this week's news



picture-news.co.uk/discuss



help@picture-news.co.uk



[@HelpPicture](https://twitter.com/HelpPicture)

Croissant Race

Around 200 Parisian waiting staff have taken part in a traditional croissant race through the streets of France's capital city. The participants, who all work in cafés and bistros, completed the 2km course whilst wearing their work uniforms. They showed their professional skills by balancing a tray containing a croissant, an empty coffee cup, and full glass of water with one hand during the race. Running is not allowed, and penalties are given for spilling the water or eating the croissant! Similar races are held in other countries too, but the first one in Paris took place in 1914. This year marks the return of the historic event after a 13-year break, timed to promote the Olympics, which will be hosted in Paris this summer. The competitors' times, and the amount of liquid they spilled, were used to calculate the winners. Pauline Van Wymeersch and Samy Lamrous were crowned Paris' fastest waiting staff. Both finished the race in less than 15 minutes. They each



Pictured: Competitors who took part in 'la course des cafés par Eau de Paris'.
Source: EAU DE PARIS Facebook page.

won medals, two tickets for the Olympic opening ceremony and a night at a Paris hotel.

Do you think it would be very difficult to carry the trays without spilling the glass of water? What skills do think would help you to do well in a race like this?

Bears in a Boat

Four young black bears, who live at Woburn Safari Park in Bedfordshire, UK, have been enjoying a new pastime. Harvard, Maple, Colorado, and Aspen have been riding on a swan pedalo! The recent heavy rain caused a mini lake to form in their reserve. Their keepers thought this would be a great time to repurpose a pedalo that was awaiting repair! Speaking about the unusual addition to the bears' habitat, Tommy Babington from the park said, 'It was great fun for visitors to see them climb on board, and we love devising new ways to provide food, scent and habitat enrichment that stimulates their natural foraging behaviours. Bears are naturally very curious animals, and keepers will encourage this with all kinds of enrichment through their habitat as this keeps their minds and bodies active. The swan boat enrichment may be a



Pictured: The black bears at Woburn Safari Park ride on a swan pedalo.
Source: Woburn Safari Park Facebook page.

less conventional approach to stimulating their natural behaviours, but it certainly was a hit.'

What other items do you think could make exciting additions to the bears' home?

Should everyone be allowed to lead a private life?



I think that some events in someone's life can be shared in public, but everyone deserves the right to have some things private.

Lena

Let us know what you think about this week's news



picture-news.co.uk/discuss



help@picture-news.co.uk



[@HelpPicture](https://twitter.com/HelpPicture)

TAKEHOME

22nd - 28th
April



Can you learn to persevere?

In the news this week

Scottish runner, Jasmin Paris, has become the first female runner to complete what is thought by many to be the world's toughest race. Jasmin is one of only twenty people to have successfully completed the Barkley Marathons in Tennessee, USA. She crossed the finish line in March with less than 100 seconds to spare before the 60-hour cut-off time. Jasmin said she wanted to inspire others and test the limits of her capabilities.

Things to talk about at home ...

- > Can you imagine how Jasmin might have felt when she finished the event? Make a list of the different feelings you believe she may have had.
- > Can you think of a time when you found something really difficult? Were you able to complete the challenge or task? Talk about the experience and what you learned from it.

Please note any interesting thoughts or comments

Share your thoughts and read the opinions of others

www.picture-news.co.uk/discuss



Reflection



Perseverance is continuing, even when things get difficult, and it may seem much easier to give up. The greatest achievements have often come from those who have overcome huge challenges through their determination.

