

Simon de Senlis Primary Weekly Update – 19th April 2024



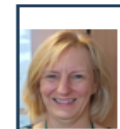
World Heritage Day International Day for Monuments and Sites

Designated Safeguarding Lead



Joanne Fennelly.
Headteacher

Deputy Designated Safeguarding Leads



Rachel Rosevear. Deputy Headteacher



Jennifer de Board.
Assistant Headteacher



Laura Cunningham. Inclusion Lead



Hannah Garrard.
Family Support Worker



Natalie Richards. EYFS Lead

Northampton Safeguarding Children's Board
(NSCB) Tel: 0300 126 1000
Email: nscb@northamptonshire.gcsx.gov.uk

Kirby Hall, near Corby, pictured on our cover, is one of the many Heritage sites Northampton has.
The websites below have more information:

[Northamptonshire Heritage Forum](#)

[Historic Places to Visit in Northamptonshire \(historic-uk.com\)](#)

[Historic sites in Northampton](#)



Simon de Senlis Primary Weekly Update – 19th April 2024

Dear Parents and Carers,

How wonderful it is to be back at school after the Easter break! It has been lovely to see every child back at school and happy to be learning and playing with their friends.

The summer term is always jam packed full of great learning and exciting events, so please see the long list of dates on the following slides. This is the term where we see learning consolidated and progress made as your child pulls together all their knowledge from the year, implementing and embedding it. As ever, enormous thanks for the work you do to support your child with their learning, their reading and their engagement. As we know, the greatest outcomes are achieved through the positive relationships we have and the shared goal of success for your child.

It's going to another great term!

Have a lovely weekend and I look forward to seeing you on Monday.

Mrs Fennelly

Welcome to the children and families who will be joining us in Reception in September 2024. We can't wait to start this exciting journey with you.



Weekly Poster

This week, at the start of the new term, we talked about how together, as a team, we can achieve great things over the coming weeks. We talked about the excitement of the weeks ahead and how proud we are of everyone's achievements.



As we continue to keep our community safe at the beginning and end of the day, please follow the highway code when parking. Recently cars have been parked in the bus bay, on the zig zags and on the corners of junctions.

The local PCSO will make unannounced visits to SdS and issue tickets to those parking inappropriately.

We are all here to ensure our children, families and neighbours are safe.

Dates for your



Date	Year group	Event
30th April	Einstein Class	School of Life at the Library
1st May	Whole School	School Photographer – class photos
2nd May	Whole School	Planetarium
3rd May	Whole School	Mufti Day to raise fund for the Changemakers. Donations welcome on Parentmail
13th May	Year 6	SATs Week
16th May	Year 6	Picnic Lunch - on the field
7th June	Whole School & Families	Fun Run 3:30pm to 4:30pm If taking part, wear PE for the day
13th June	New Reception Parents 2024/25	Parent Intake Meeting 6:00pm to 8:00pm

Dates for your



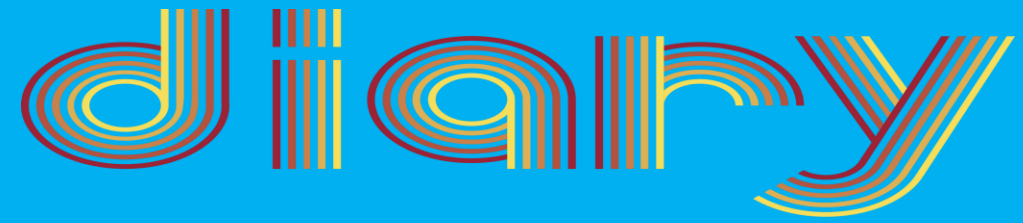
Date	Year group	Event
17th June	KS1 (Reception, Years 1, 2 & SU)	9:30am Sports Day – families invited
21st June	Year 6	Transition Prayer Space
28th June	Whole School	End of Year Reports
29th June	Whole School Community	School Summer Fete
1st July	Changemakers	Changemakers to University of Northampton
8th & 9th July	Whole School	Transition Days
10th July	KS2 (Years 3, 4, 5 & 6)	9:30am Sports Day – families invited
11th & 12th July	Whole School	Circus Skills Day- more information to come

Dates for your



Date	Year group	Event
15th July	Music groups, choirs- details of whom to come	Performing Arts Evening 5:30pm to 7:30pm
17th July	Drama Club Players	Drama Performance 10:00am to parents and families. Tickets coming soon
17th July	Whole School	Summer Disco 3.15pm to 4.15pm for Years SU, Rec, 1 & 2 4:30pm to 5:30pm for Years 3 & 4 5:45pm to 6:45pm for Years 5 & 6
18th July	Drama Club Players	Drama Performances 1:45pm & 6:00pm to parents and families. Tickets coming soon
19th July	Whole School & Families	Art Exhibition starts at 2:30pm
22nd July	Year 6 & Families	Leavers Assembly followed by tea and cake on the field

Trips Dates for your



Year Group	Date	Event
Reception	23rd May	Crocodiles of the World
Year 1	14th June	Woburn Safari Park
Year 2	9th May	Cadbury World
Year 3	20th – 21st June	Frontier Centre Residential
Year 4	26th – 28th June	West Runton Residential
Year 4	4th June	National Art Gallery London – Take One Picture
Year 5 Dyson Class	18th June	The Festival Performance at the Royal & Derngate
Year 6	12th June	STEAM Event at UoN
Year 6	1st - 5th July	Isle of Wight Residential

Are you looking for part time job?

We are looking to recruit a reliable and committed Lunchtime Supervisor to join our hard-working team. The successful candidate will be able to work effectively as a member of the team, have excellent interpersonal skills and consistently support the school values and approaches.

Start date ASAP

Days of work: Monday – Friday

**Starting salary: Grade C, Point 2 (£22,366 FTE – pro-rata). Hourly rate
£11.59**

Contract: Permanent, 5 hours per week (term time only – 38 weeks per year)

**If you are interested and would like more details or would like to apply please
email: info@simondesenslis.org**



If you, or any of your emergency contacts, have changed phone number - personal or work, email address or have moved house please email: info@simondesenlis.org to let us know.



A background image showing a variety of hands of different skin tones giving thumbs up against a teal background.

live your best life

[Home](#) [About](#) [News](#)

The role of the Local Area Partnerships

About the Local Area Partnerships

There are nine Local Area Partnerships (LAP) in West Northamptonshire, also known as LAPs, that bring together many local organisations to ensure health and care services are better co-ordinated and focused on the needs of each area they serve. By working together with each other and with local communities we can design services that really make a difference, to help you, your family and your neighbourhood, live your best life.



**Northampton South Local Area Partnership | West
Northamptonshire Local Area Partnerships
(westnorthantsliveyourbestlife.uk)**

Welcome to your Northampton South Local Area Partnership

Welcome to your Northampton South Local Area Partnership (LAP) which covers the communities of Delapre and Rushmere, East Hunsbury, Nene Valley and Shelfleys. We are a group of organisations who have come together to work with those who live in this area to design joined up local services that work for you.

Thunk of the Week

A **thunk** is an **unusual question** that makes you **think**. A beguiling question about everyday things that stops you in your tracks and helps you start to look at the world in a whole new light.



**If you couldn't
choose an object,
what would the
most important
thing in your life be?**



Online Safety

part of our Social Media & Live Streaming Series

NOS
Social Media & Live Streaming

Brought to you by
NOS National Online Safety
www.nationalonlinesafety.com

What you need to know about... MUSIC STREAMING APPS & SITES

Download the App Search Artists

What are they? 'Music Streaming Apps & Sites'

Music streaming apps allow people to listen to music on their devices. It gives users access to millions of songs and artists from around the world. Popular music streaming apps and sites include Spotify, Soundcloud, Apple music, Amazon Prime and Deezer. Music streaming allows children to listen to songs from around the world in a much easier and cheaper way. This enables them to showcase their talent which would have been very hard to do many years back.

Know the Risks

Explicit content

Explicit content is everywhere online, including in popular music. Children can easily access songs on Spotify, for example, that may have explicit or inappropriate language not suitable for children. It is also easy to erase searches so you can't see what a child has been listening to.

Adult themed podcasts

Many music streaming apps also offer the ability to listen to podcasts which can vary across any kind of topic, from business and health to comedy and relationships. Again, children could be exposed to content which is more adult themed or contains age-inappropriate language.

Safety Tips

Use child friendly apps

Many music streaming services are made just for children. For instance, the Spotify kids app provides parents with control over what their children listen to and all the content is family friendly and fun for children to explore.

18+ Turn off explicit content

Most of the major music streaming apps will provide the option to turn off explicit material to make sure the music is completely clean. Some services even offer an option to lock the content censoring settings with a password, so your child can't switch it back.

PRIVATE

Online Safety- Music Streaming Apps continued



Chatting to strangers

Some music apps, like Playlist, want to make music a more social experience by finding others who share the same musical tastes and will allow users to join group chats where they listen to a playlist together in real time. This could open up your child to talking to strangers online.

Implement privacy controls

Check the privacy setting of your child's app. Ensure that whichever app or site they choose to stream music, the settings are set to be private. This way they can only share the music they are listening too with friends and family and can't engage in conversation with strangers.

Offering Support

Explore apps yourself

If your child insists on wanting to use a music streaming app then be part of the journey with them. Take the time to understand which apps they prefer to use and why they want to use it. Find out how to use the app yourself and understand what they could be exposed to and how to ensure they get the most of it in a safe manner.

Regularly check-in

Have regular conversations with your child about what they are listening to and how they are feeling. If they do hear explicit music or content that makes them feel uncomfortable, let them know that they can always talk to you and discuss what they've heard and what it means.

Our Expert
Parven Kaur

Parven Kaur is social media expert and digital media consultant who is passionate about improving digital literacy for parents and children. She has extensive experience in the social media arena and is the founder of Kids N Clicks; a web resource that helps parents and children thrive in a digital world.

THIS WEEK IN ASSEMBLY

We thought about 'legends' in assembly this week. We started by thinking about what a legend is and then what people means when they call someone a legend. This led us to find out about sports personalities who inspire us and about the life of Eric Liddell. We realised that Eric always gave his best whether in sport or in helping others. We discovered that many of his actions were determined by his faith and thought about the importance of making a decision that you, yourself, think is right and not giving in to pressure of others. We also considered the importance of respecting the views of others- another important value.



SPORTS – RUGBY

Have you been watching the thrilling rugby matches in the Women's Six Nations Championship, which is an international rugby competition contested between the women's national teams of England, France, Ireland, Italy, Scotland and Wales.

England currently top the table with the final matches this weekend, so why not cheer on your favourite team and spot some super skills.

[Women's Six Nations Championship | World Rugby](#)



To improve your playing skills, try these challenges.

Pick up and Put Down

Place 4 items around a centre marker
How quickly can you pick up one item at a time and place it on the centre marker? Then place them back down.
Challenge a friend or set a personal best time.



Horizontal Jump

Jump forward as far as you can.
Remember to stand with knees bent and feet shoulder width apart. Extend arms quickly forward and above head. Bend knees on landing, hold your balance.

School Mental Health Leads

Ms Cunningham and Miss Garrard are the Mental Health Leads at Simon de Senlis

If you have any worries or concerns about any aspect of your child's mental wellbeing please speak to your child's class teacher or contact us in school.



Laura Cunningham

Inclusion Leader
Deputy Designated Safeguarding Lead
Senior Mental Health Lead



Hannah Garrard

Family Support Worker
Deputy Designated Safeguarding Lead
Mental Health First Aider

Miss Garrard says...

Head lice and nits are very common in young children and their families. They do not have anything to do with dirty hair and are picked up by head-to-head contact.

Check if it's head lice



Head lice are small insects, up to 3mm long.

Wet combing

Lice and nits can be removed by wet combing. You should try this method first.

You can buy a special fine-toothed comb (detection comb) online or from pharmacies to remove head lice and nits.

There may be instructions on the pack, but usually you:

- wash hair with ordinary shampoo
- apply lots of conditioner (any conditioner will do)
- comb the whole head of hair, from the roots to the ends

It usually takes about 10 minutes to comb short hair, and 20 to 30 minutes for long, frizzy or curly hair.

Do wet combing on days 1, 5, 9 and 13 to catch any newly hatched head lice. Check again that everyone's hair is free of lice on day 17.

Medicated lotions and sprays

Ask a pharmacist for advice if you have tried wet combing for 17 days, but your child still has live head lice.

They may recommend using medicated lotions and sprays. These kill head lice in all types of hair, and you can buy them from pharmacies, supermarkets or online.

Head lice should die within a day. Some lotions and sprays come with a comb to remove dead lice and eggs.

Some treatments need to be repeated after a week to kill any newly hatched lice.

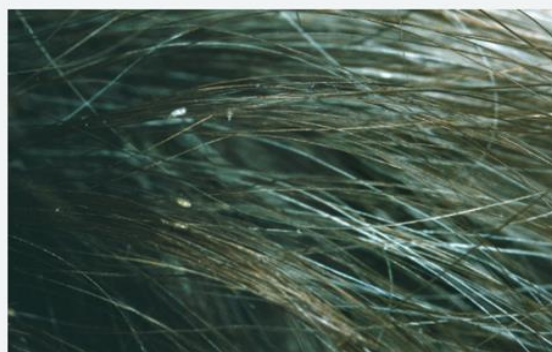
Check the pack to see if they're OK for you or your child and how to use them.

If lotions or sprays do not work, speak to a pharmacist about other treatments.

Some treatments are not recommended because they're unlikely to work.

Tips to support managing headlice, taken from the NHS website.

[Head lice and nits - NHS \(www.nhs.uk\)](https://www.nhs.uk)



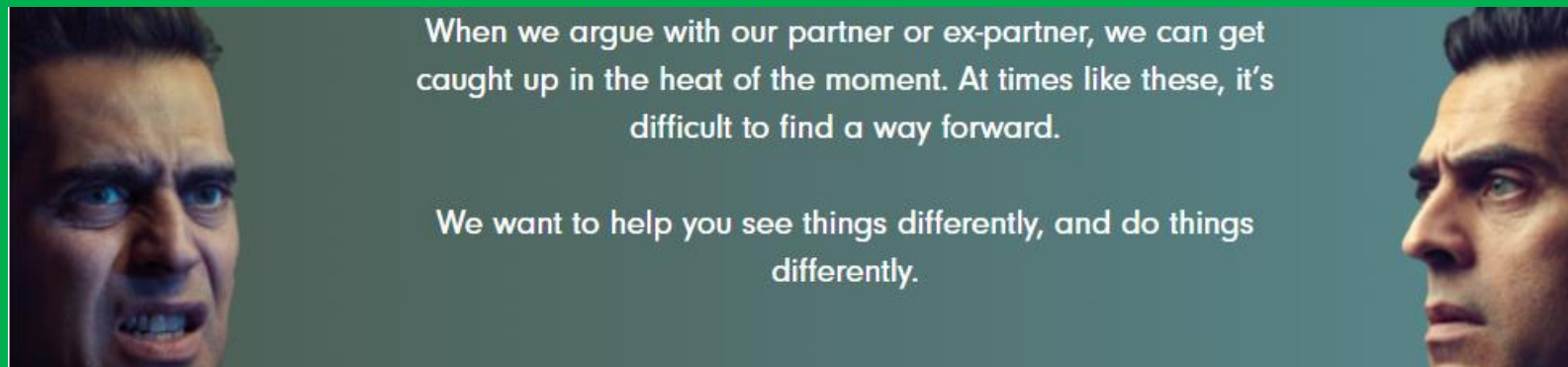
Head lice eggs (nits) are brown or white (empty shells) and attached to the hair.

Miss Garrard says...

What is Parental Conflict?

Conflict between parents is a normal part of relationships and family life. Not all conflict is damaging, but the way conflict manifests – its frequency, intensity and how it is resolved – can negatively affect children.

Where conflict between parents is frequent, intense and poorly resolved, it can harm children's outcomes – regardless of whether parents are together or separated.



See it differently is a service that offer videos as a reflection tool to support parents who are experiencing conflict. These videos are a useful tool to see what conflict between parents look through the eyes of a child.

Here is the link to this supportive resource: [See it differently](#)





SEND SESSIONS 2024
First Friday of every month
6:30pm-8:30pm

Exclusive SEND sessions
for families and friends of children
with special educational needs and disabilities

£8.95 per child

Adults Free



NEW GROUP

**EVERY 2ND TUESDAY
7-8.30PM
STARTING 14TH MAY**

**NORTHAMPTON
PARENT/CARER
SUPPORT
GROUP**



**Are you a parent/carer of
an autistic child or young
person?**

**Come along and meet other
parents /carers, increase
your support network and
take some time out for you!**

**THE COACH HOUSE
DELAPRE ABBEY
NN4 8AW**

**For more information email:
fiona@enfold.org.uk**



www.enfold.org.uk



Simon de Senlis Primary



Dear parents and carers, as you are aware we have recently joined a school SEND partnership with Hunsbury Park Primary. As a result of this, we are able to offer parents access to some free online workshops run by a host of SEN practitioners across the year.

This term we are pleased to offer you a Zoom online session with NHS SALT, on Tuesday 30th April 2024 from 7-9pm. Details of the session content are below:

Understanding Developmental Language Disorder

This session is completely free to all parents with children at Simon de Senlis. To register your interest you must consent to share your email address with Kate Burt from Hunsbury Park Primary School. Closer to the time we will then send out a Zoom link. This link must not be shared with anyone else whose children do not attend our school as Kate Burt will collate a list of parent's email addresses and these will be checked during the meeting.

We hope that you will take up this exciting offer.

Please register your interest by replying to the email (sent to all parents on Parentmail) by Friday 26th April.

Any questions please contact me via the school.

Many thanks, Ms Cunningham

Food Aid / Community Larders. No referral required

Day	Time	Location	Membership / costs
Monday	1:30pm – 2:15pm	Roade village Hall. Bailey Brooks Lane. NN7 2LS	Access to all. £10 subscription, £5 p/w
Monday	4pm – 7pm	McCarthy Dixon Food Larder @ Swan & Helmet. Northampton Town Centre	No referral - Turn up £5 per 8 Items
Tuesday	2pm – 3pm & 6pm - 7pm	The Nest, Woodford Halse Primary Academy, Scrivens Hill, Woodford Halse, NN11 3SU.	Access to all. £10 subscription, £5 p/w
Tuesday	4pm – 7pm	McCarthy Dixon Food Larder @ Swan & Helmet. Northampton Town Centre	No referral - Turn up £5 per 8 Items
Wednesday	11am - 1pm	Dostiyo Community Fridge. Northampton Town Centre	No Criteria
Wednesday	4:15pm – 6pm	Towcester Community Larder Riverside Centre, Islington Road, Towcester, NN12 6AU	Access to all. £10 subscription, £5 p/w
Wednesday	4:30pm – 5:15pm	Brixworth Community Larder	Access to all. £10 subscription, £5 p/w

Food Aid / Community Larders. No referral required

Day	Time	Location	Membership / costs
Wednesday	5:30pm – 6:15pm	Moulton Community Larder	Access to all. £10 subscription, £5 p/w
Wednesday	4pm – 7pm	McCarthy Dixon Food Larder @ Swan & Helmet. Northampton Town Centre	No referral - Turn up £5 per 8 Items
Thursday	10am – 11:30am	Towcester Community Larder Riverside Centre, Islington Road, Towcester, NN12 6AU	Access to all. £10 subscription, £5 p/w
Thursday	11am - 1pm	Dostiyo Community Fridge. Northampton Town Centre	No Criteria
Thursday	4pm – 7pm	McCarthy Dixon Food Larder @ Swan & Helmet. Northampton Town Centre	No referral - Turn up £5 per 8 Items
Friday	4pm – 7pm	McCarthy Dixon Food Larder @ Swan & Helmet. Northampton Town Centre	No referral - Turn up £5 per 8 Items
Saturday	12pm - 2pm	McCarthy Dixon Food Larder @ Swan & Helmet. Northampton Town Centre	No referral - Turn up £5 per 8 Items
Sunday	12pm - 2pm	McCarthy Dixon Food Larder @ Swan & Helmet. Northampton Town Centre	No referral - Turn up £5 per 8 Items

Calling All Kids: Get Ready to Dash for Cash!

Enter the Northampton 10k, 5k or Junior Run to support our amazing local NHS and your school at the same time.

Sponsored by:



Join us for an unforgettable event!

- A fast and flat route, suitable for all abilities
- **FREE** entry with a minimum sponsorship*
- **Distances available:** Junior (half a mile) 10k and 5k
- Money raised will support Northamptonshire Health Charity and your school!

*£50 for Junior Race, £150 for 10k and 5k Race, T&Cs apply, contact us for details.

Sunday
26th May
at Sixfields
Stadium



Sign up here



www.northamptonshirehealthcharity.co.uk



Registered Charity No: 1165702



If you're interested in taking part in a sponsored funrun, this could be of interest to you.

The entry to the funrun is free but there is a requirement for sponsorship.

The first £50 of sponsorship will go to Northampton Health Charity, anything above this will be split 50/50 between Northampton Health Charity and Simon de Senlis.

If you want to register for the run go to the following website: www.northamptonshirehealthcharity.co.uk

The logo for the Milton Keynes Brick Festival is set against a background of yellow and orange squares, resembling a brick wall. The text 'MILTON KEYNES' is in white on a black rectangular background. Below it, 'BRICK' is in large, bold, white letters on a black background. At the bottom, 'FESTIVAL' is in white letters on a red background.

MILTON KEYNES BRICK FESTIVAL

MORE LEGO THAN YOU CAN DREAM OF

Don't miss the chance to be a part of the most epic LEGO celebration! Grab your tickets and get ready for a day filled with building, creativity, and endless fun!

Book now at www.MiltonKeynesBrickFestival.com

Save the date: Bank Holiday Monday 6th May 2024

Where: Middleton Hall, centre:mk, Midsummer Blvd, Milton Keynes, MK9 3QA

Event Times: 10am – 6pm *(see your ticket name for your entry time)*

Find out more – www.BrickFestivalEvents.com

LEGO CAR RALLY

RUBBER BAND CHALLENGE

BUILD ANY TYPE OF VEHICLE ONLY USING LEGO ELEMENTS

*FURTHEST DISTANCE IN EACH CLASS
WINS AN AWESOME LEGO PRIZE!*

3 AGE CLASSES

- > UNDER 11s
- > 11-16s
- > 17s & OVER



YOUR RUBBER BAND WILL BE
SUPPLIED ON THE DAY:



VEHICLES MUST BE MADE ENTIRELY OUT OF LEGO ELEMENTS. THEY MUST BE EXCLUSIVELY POWERED BY THE RUBBER BAND PROVIDED. THERE ARE NO SIZE OR WEIGHT LIMITS.
VEHICLES MUST NOT LEAVE THE GROUND DURING THEIR POWERED RUN PLEASE VISIT THE LEGO CAR RALLY SIGN IN DESK WHEN YOU ARRIVE AT THE EVENT.
ENSURE YOUR VEHICLE IS BROUGHT INTO THE EVENT IN A NAMED BAG.

*BUILD YOUR VEHICLE AT HOME
BRING IT ALONG TO RACE & WIN!*

TURN
OVER FOR
EVENT
DETAILS

MILTON KEYNES
BRICK
FESTIVAL

TICKETS AVAILABLE ONLINE NOW!



**AWESOME LEGO
DISPLAYS**

**OLD & NEW LEGO
FOR SALE**

**ACTIVITIES
FOR ALL AGES**

**EXCITING BUILD
COMPETITIONS**

**PICK YOUR OWN
LOOSE BRICKS**



6TH MAY 2024

MILTON KEYNES
BRICK
FESTIVAL

**MORE LEGO THAN
YOU CAN DREAM OF**

MIDDLETON HALL

<div></div> Pupil Days	<div></div> Bank Holidays
<div></div> School Holidays	<div></div> Teacher Training Days

NPAT Academic Calendar 24/25

Teacher Training Days
 Monday 2 September 2024
 Tuesday 3 September 2024
 Monday 4 November 2024
 Monday 24 February 2025
 Monday 2 June 2025

September 2024					
Mon		2	9	16	23
Tues		3	10	17	24
Wed		4	11	18	25
Thu		5	12	19	26
Fri	30	6	13	20	27

October 2024					
Mon	30	7	14	21	28
Tues	1	8	15	22	29
Wed	2	9	16	23	30
Thu	3	10	17	24	31
Fri	4	11	18	25	

November 2024					
Mon		4	11	18	25
Tues		5	12	19	26
Wed		6	13	20	27
Thu		7	14	21	28
Fri	1	8	15	22	29

December 2024					
Mon	2	9	16	23	30
Tues	3	10	17	24	31
Wed	4	11	18	25	
Thu	5	12	19	26	
Fri	6	13	20	27	

January 2025					
Mon		6	13	20	27
Tues		7	14	21	28
Wed	1	8	15	22	29
Thu	2	9	16	23	30
Fri	3	10	17	24	31

February 2025					
Mon	3	10	17	24	
Tues	4	11	18	25	
Wed	5	12	19	26	
Thu	6	13	20	27	
Fri	7	14	21	28	

March 2025					
Mon		3	10	17	24 31
Tues		4	11	18	25
Wed		5	12	19	26
Thu		6	13	20	27
Fri		7	14	21	28

April 2025					
Mon		7	14	21	28
Tues	1	8	15	22	29
Wed	2	9	16	23	30
Thu	3	10	17	24	
Fri	4	11	18	25	

May 2025					
Mon		5	12	19	26
Tues		6	13	20	27
Wed		7	14	21	28
Thu	1	8	15	22	29
Fri	2	9	16	23	30

June 2025					
Mon		2	9	16	23
Tues		3	10	17	24
Wed		4	11	18	25
Thu		5	12	19	26
Fri		6	13	20	27

July 2025					
Mon	30	7	14	21	28
Tues	1	8	15	22	29
Wed	2	9	16	23	30
Thu	3	10	17	24	31
Fri	4	11	18	25	

August 2025					
Mon			4	11	18 25
Tues			5	12	19 26
Wed			6	13	20 27
Thu			7	14	21 28
Fri		1	8	15	22 29



Key

School Holidays		Teacher Training Days	
Pupil Days		Bank Holidays	



NPAT Academic Calendar 25/26

Teacher Training Days

Monday 1st September 2025
 Tuesday 2nd September 2025
 Monday 3rd November 2025
 Monday 5th January 2026
 Monday 20th July 2026*
 (disaggregated)

September 2025					
Mon	1	8	15	22	29
Tue	2	9	16	23	30
Wed	3	10	17	24	
Thu	4	11	18	25	
Fri	5	12	19	26	

October 2025					
Mon		6	13	20	27
Tue		7	14	21	28
Wed	1	8	15	22	29
Thu	2	9	16	23	30
Fri	3	10	17	24	31

November 2025					
Mon	3	10	17	24	
Tue	4	11	18	25	
Wed	5	12	19	26	
Thu	6	13	20	27	
Fri	7	14	21	28	

December 2025					
Mon	1	8	15	22	29
Tue	2	9	16	23	30
Wed	3	10	17	24	31
Thu	4	11	18	25	
Fri	5	12	19	26	

January 2026					
Mon		5	12	19	26
Tue		6	13	20	27
Wed		7	14	21	28
Thu	1	8	15	22	29
Fri	2	9	16	23	30

February 2026					
Mon	2	9	16	23	
Tue	3	10	17	24	
Wed	4	11	18	25	
Thu	5	12	19	26	
Fri	6	13	20	27	

March 2026					
Mon	2	9	16	23	30
Tue	3	10	17	24	31
Wed	4	11	18	25	
Thu	5	12	19	26	
Fri	6	13	20	27	

April 2026					
Mon		6	13	20	27
Tue		7	14	21	28
Wed	1	8	15	22	29
Thu	2	9	16	23	30
Fri	3	10	17	24	

May 2026					
Mon		4	11	18	25
Tue		5	12	19	26
Wed		6	13	20	27
Thu		7	14	21	28
Fri	1	8	15	22	29

June 2026					
Mon	1	8	15	22	29
Tue	2	9	16	23	30
Wed	3	10	17	24	
Thu	4	11	18	25	
Fri	5	12	19	26	

July 2026					
Mon		6	13	20	27
Tue		7	14	21	28
Wed	1	8	15	22	29
Thu	2	9	16	23	30
Fri	3	10	17	24	31

August 2026					
Mon	3	10	17	24	31
Tue	4	11	18	25	
Wed	5	12	19	26	
Thu	6	13	20	27	
Fri	7	14	21	28	

News For Our Children

19th April 2024



What's happening in the news this week?



Let's have a look at this week's poster!

15th – 21st April 2024



What does art mean to you?





Let's look at this week's story

A new artwork, from the mysterious street artist Banksy, appeared in North London overnight in March. The artwork shows green paint sprayed on a wall behind a cut-back tree to look like greenery, with a stencil of a person holding a spray can next to it. In the days following its creation, it was covered with plastic and surrounded by wooden boards to protect it. The local council, Islington, has added a frame around the site, which has plastic panels to allow people to view the artwork, whilst ensuring its protection.

This week's story looks at events related to ...



Dino designs!

It has been millions of years since dinosaurs roamed the Earth and today, people still find them fascinating. Dinosaurs have inspired the imaginations of many of us, leading to the creation of games, toys and a range of films! Scientists now think that ancient humans may also have been inspired by the dinosaurs! Experts have been studying some mysterious carvings that were found in Brazil. It is thought that, as long as 9,000 years ago, ancient artists were creating drawings by using tools to scrape shapes and patterns into rock. Interestingly, scientists think that the carvings found in Brazil, known as petroglyphs,



Pictured: Fossilised dinosaur footprint.
Source: Canva.

may have been inspired by dinosaur footprints! This is because so many of the carvings are located right next to fossilised footprints, almost as if the artists were copying them. Researchers say that while ancient humans may not have known exactly what these fossils were, they seemed to realise that they were important, as there is evidence to show they were very careful not to touch them.

The world's 'happiest' countries

The latest World Happiness Report was published earlier this year and is topped by Finland for the seventh year in a row. The report surveys over 350,000 people from 95 countries by asking them to rate their happiness out of 10. The top ten 'happiest' countries include many Scandinavian countries, such as Denmark, Sweden and Norway, as well as Switzerland and Australia. The UK sits at 20th in the list while the US is now out of the top 20 in 23rd

place. Countries at the bottom of the list include Afghanistan, Lebanon and Lesotho. Since the study began in 2012, there has been very little change in the overall rankings. Researchers also notice there is a large difference in points between the most and least happy countries, with Finland scoring 7.7 compared with Afghanistan's 1.7.



Pictured: Map of Nordic countries.
Source: Canva.

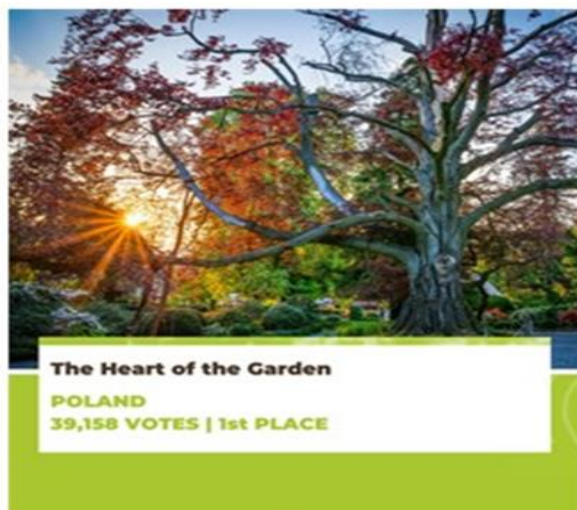
Should there be a limit on how rich one person can become?



I think they should give their money to a charity so they can help the people in need
Matthew

European Tree of the Year 2024

The winner of the European Tree of the Year 2024 (ETY 2024) has been announced as 'The Heart of the Garden' from Poland with 39,158 votes! The Polish beech tree, from the Niemcza region, grows in the centre of an old park in the University of Wrocław's botanical garden. The impressive beech is estimated to be 200 years old. The ETY website describes the tree, stating, 'Its majestic appearance impresses us with its unusually shaped and thick trunk, widely spread branches, and purple-coloured leaves that shine beautifully in the sun.' The annual competition highlights the most unique and beautiful trees with fascinating stories from around the continent of Europe. The first ETY took place in 2011, with five countries (Czech Republic, Slovakia, Hungary, Bulgaria and Romania) taking part. This has now risen to 16 countries, with each entering the winning tree from their national competitions. Once the 174,112 votes had been counted, the results were announced. This is the



The Heart of the Garden
POLAND
39,158 VOTES | 1st PLACE

Pictured: The winner of the European Tree of the Year 2024 is The Heart of the Garden from Poland.
Source: European Tree of the Year Facebook page.

third year in a row that a Polish tree has won first place! Second place was awarded to 'The Weeping Beech of Bayeux' from Normandy, France. Third place went to 'The Thousand-year-old Olive Tree of Luras' from Sardinia, Italy.
Do you have a favourite tree?
Do you think unique trees should be celebrated?

Striking Gold

Metal detectorist, Richard Brock from Somerset in the UK, has found England's biggest gold nugget! He literally struck gold when he found a 64.8g nugget buried about 15cm underground whilst on a group dig on farmland in Shropshire. The find was even more shocking as the veteran detectorist showed up to the dig an hour late, only to find that his equipment would not work - he had to use his older, faulty back up machine. 'I couldn't believe it,' Richard Brock said, 'I turned up late, was only there a matter of minutes, and this treasure-hunting expedition was supposed to last all day. It just goes to show that it doesn't really matter what equipment you use. If you are walking over the find and are alert enough to what might be lurking underneath the soil, that makes all the difference.' The gold nugget has been named, Hiro's

Nugget, after Mr Brock's wife. It is being sold by Mullock Jones Auctioneers & Valuers and hoped to make at least £30,000!

Do you think it would be exciting to go on an expedition with a metal detector? How often do you think people find 'real' treasure?



Pictured: 'Hiro's Nugget'.
Source: Mullock Jones Auctioneers & Valuers X page.

Should there be a limit on how rich one person can become?



I think there should be a limit to how rich one person can be if the rest of the world is poor it is not fair.

Janaya

Let us know what you think about this week's news



picture-news.co.uk/discuss



help@picture-news.co.uk



[@HelpPicture](#)

TAKEHOME



In the news this week

A new artwork, from the mysterious street artist Banksy, appeared in North London overnight in March. The artwork shows green paint sprayed on a wall behind a cut-back tree to look like greenery, with a stencil of a person holding a spray can next to it. In the days following its creation, it was covered with plastic and surrounded by wooden boards to protect it. The local council, Islington, has added a frame around the site, which has plastic panels to allow people to view the artwork, whilst ensuring its protection.

Things to talk about at home ...

- > Share your experience of graffiti. Is there any in your local area?
- > What is your definition of art?
- > Do you like creating art? If so, what type?

Please note any interesting thoughts or comments

Share your thoughts and read the opinions of others

www.picture-news.co.uk/discuss



Reflection



Art can be anything created with imagination that expresses important ideas or feelings. It can mean something different to each one of us.

